

design LUDOVICA+ROBERTO PALOMBA

1997

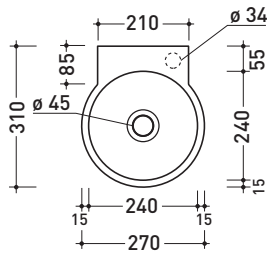
5059 Mini Twin 30

Wall-hung basin cm 27

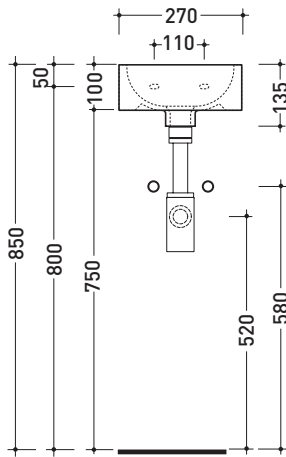
Complements: **Line accessories:** TWO - HOOP - NOKE' - FOLD

Technical accessories: **Chrome siphon (SIFL/CR) - Telescopic chrome siphon (SIFL066)**
Stop & Go drain (PLSG)
Ceramic Stop&Go drain (PLCE)
Two piece set chrome tap filters (RF026)
Fixing kit for wall (9002)

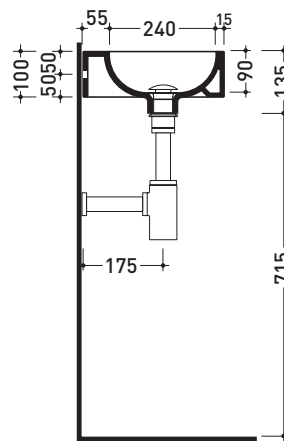
Package dim. 25 x 15 x 33,5 cm | Weight 5,5 kg | Pz. Pallet n° 54



vista zenitale / zenital view



vista frontale / frontal view



sezione longitudinale / section

size in mm

september 2016

CERAMIC: glossy finish

white black



matt finish

milky white graphite antracite lava grey nuvola fango

