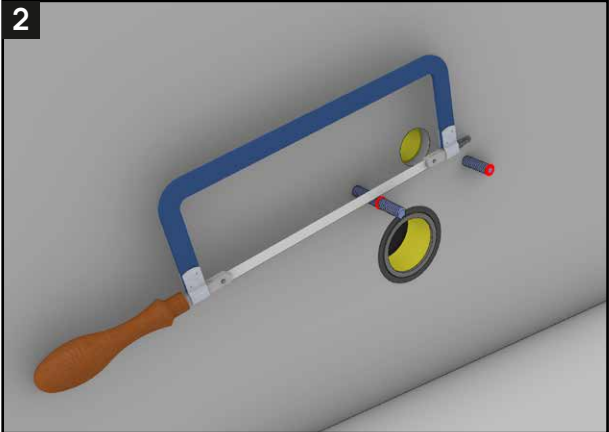
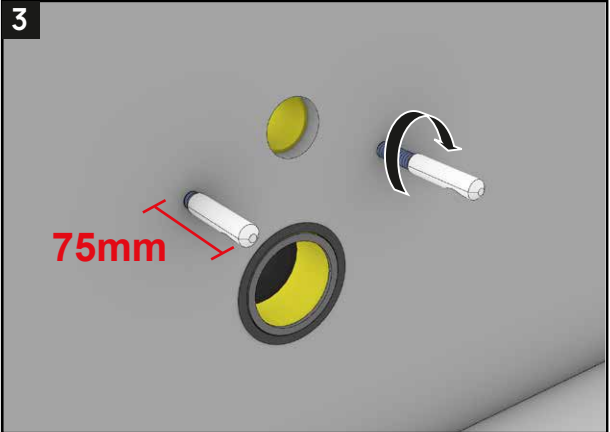


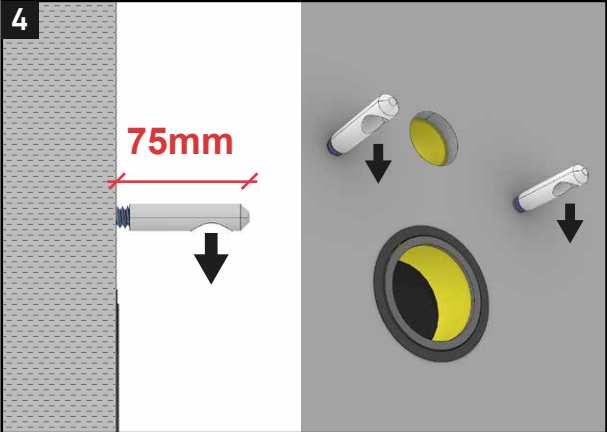
Segnare le barre filettate che escono dalla cassetta di scarico a 30mm di distanza dal muro.



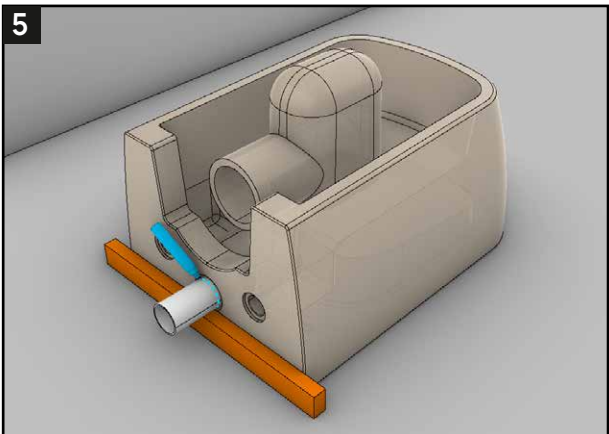
Tagliare a misura le barre filettate seguendo il segno apportato nel precedente passaggio.



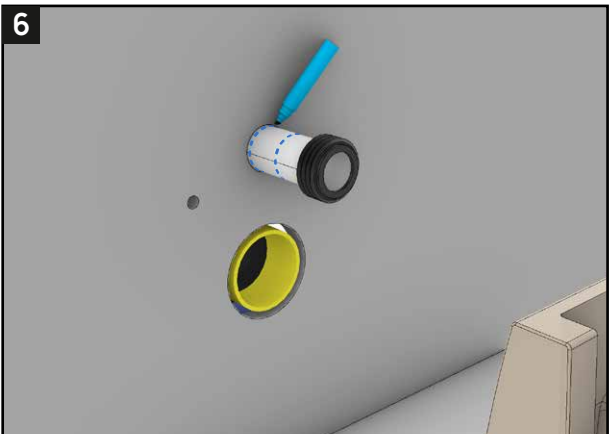
Avvitare i cannotti (B1) alle barre filettate, e regolare alla misura indicata (75mm dal muro).



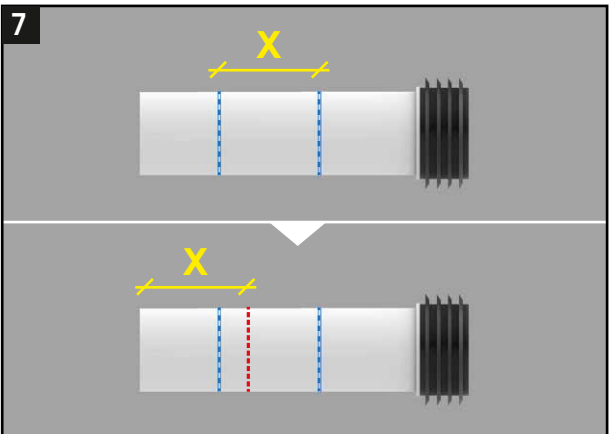
La cavità del cannotto va regolata verso il basso. NB: la tolleranza è preferibile in difetto (<75mm)



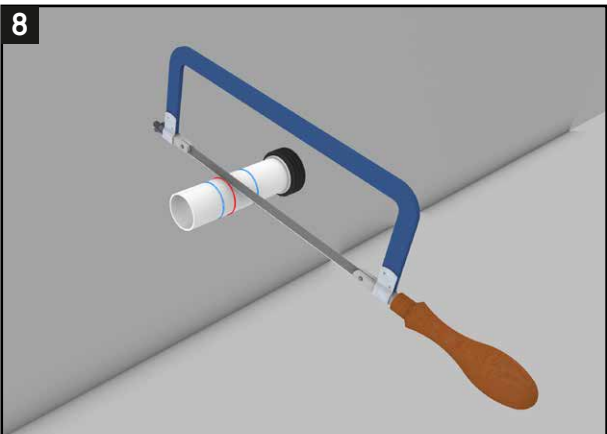
Inserire il tubo di adduzione nell'apposita sede del wc fino a battuta; con l'aiuto di un regolo, rilevare la misura a filo del wc e segnare con un pennarello.



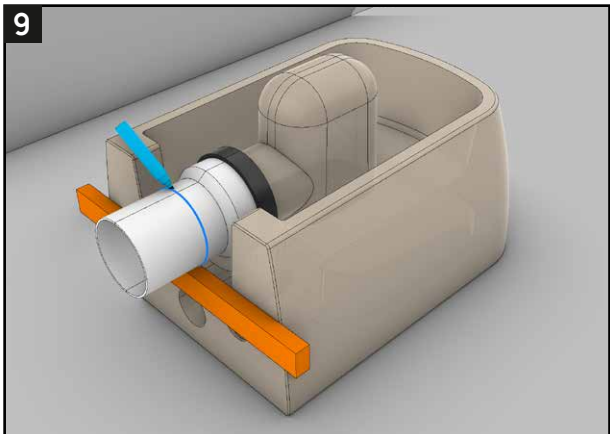
Inserire il tubo di adduzione nell'apposita sede della cassetta di scarico a muro fino a battuta; con il pennarello riportare un segno a filo della parete.



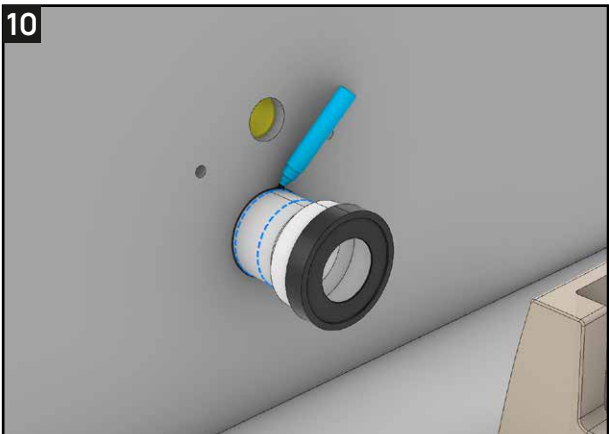
Rilevare la misura X risultante tra i 2 segni apportati sul tubo, e riportarla sulla parte finale dello stesso, apportando un ulteriore segno.



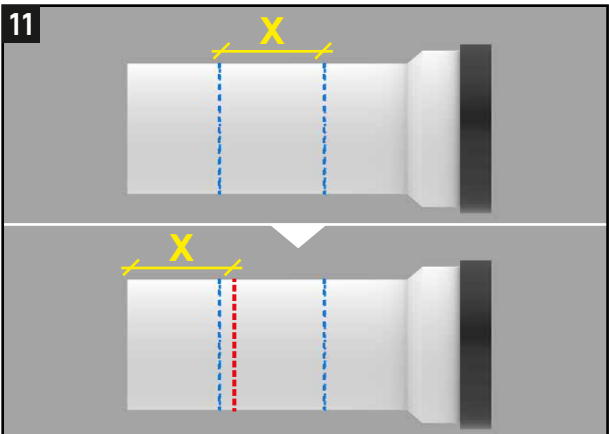
Tagliare la parte in eccesso del tubo, seguendo il segno apportato nel passaggio precedente.



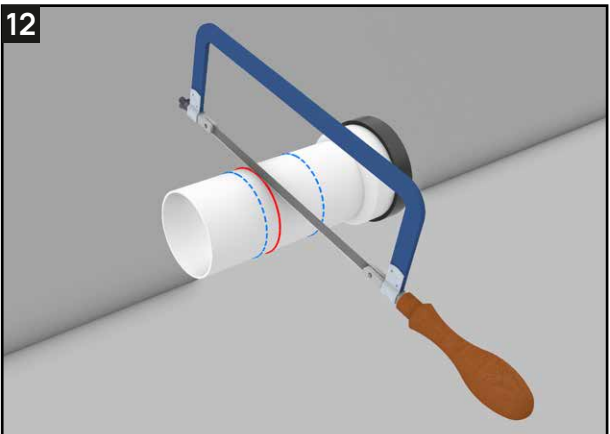
Inserire il tubo di scarico sul sifone del wc fino a battuta; con l'aiuto di un regolo, segnare la misura a filo del wc.



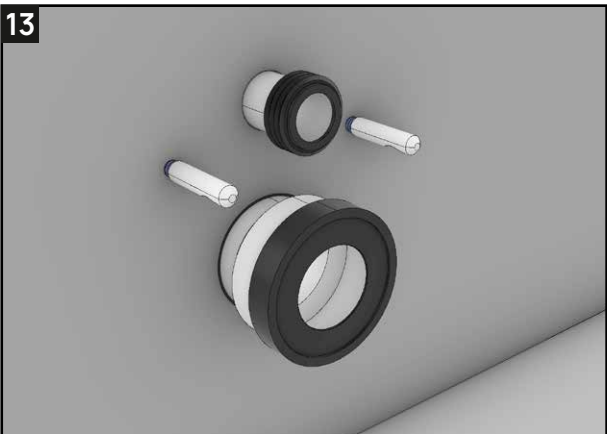
Inserire il tubo di scarico fino a battuta nell'apposita sede della cassetta a muro; segnare a filo della parete.



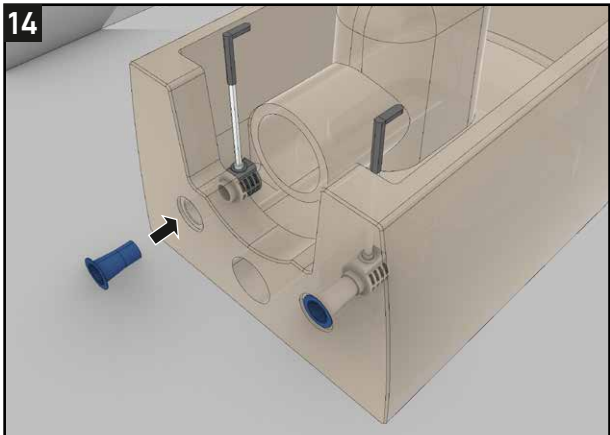
Riportare la misura X risultante tra i 2 segni BLU, sulla parte finale del tubo, facendo altro segno (ROSSO).



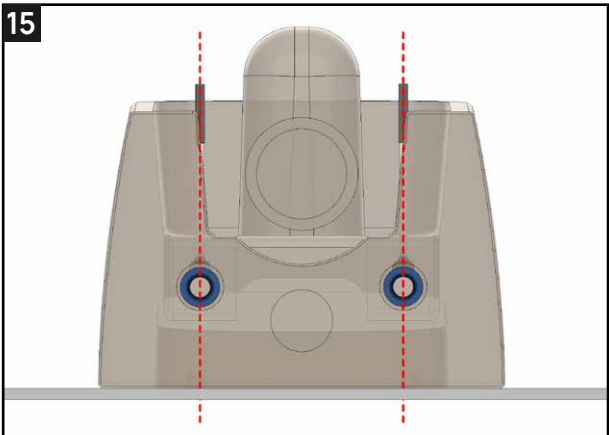
Tagliare la parte in eccesso del tubo, seguendo il segno riportato in ROSSO



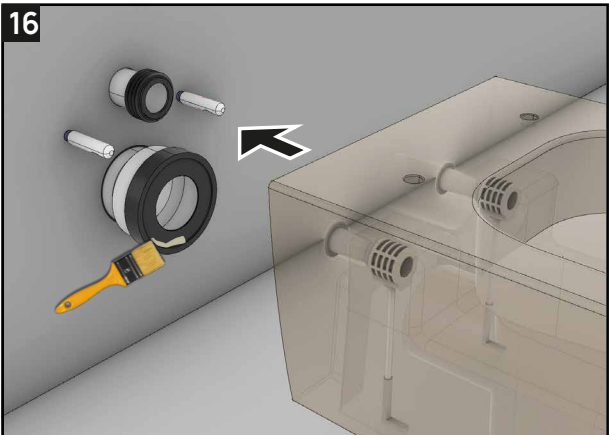
Inserire i tubi di adduzione e scarico tagliati a misura nelle apposite sedi.



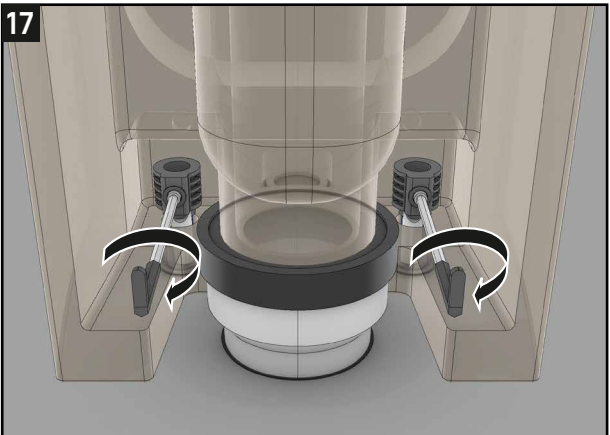
Inserire i fissaggi B2 nella parte interna del wc e agganciare dall'esterno i 2 imbuti B3 negli appositi fori



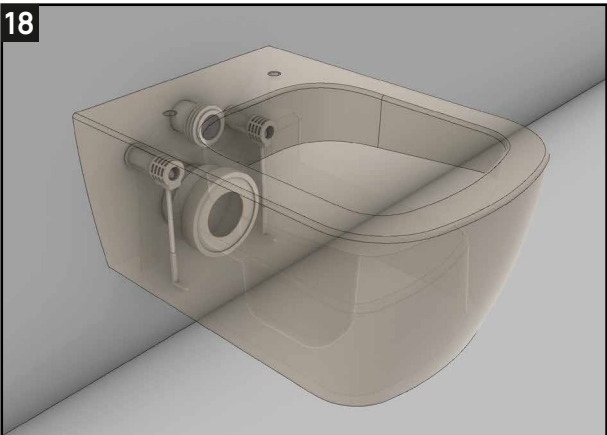
Ruotare i fissaggi (B2) fino a che gli assi non siano perpendicolari al pavimento.



Lubrificare le guarnizioni e inserire il sanitario facendo attenzione che i cannotti siano all'interno degli imbuti.

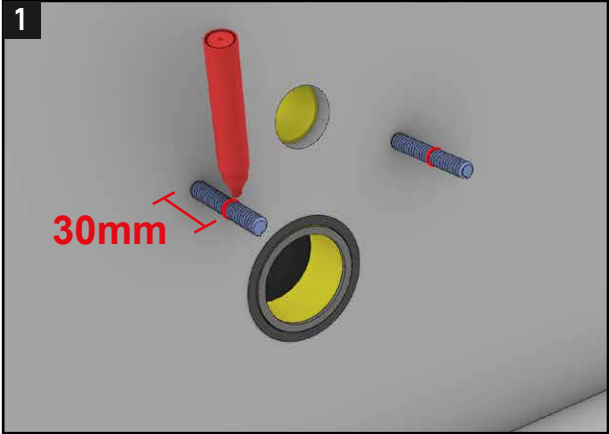
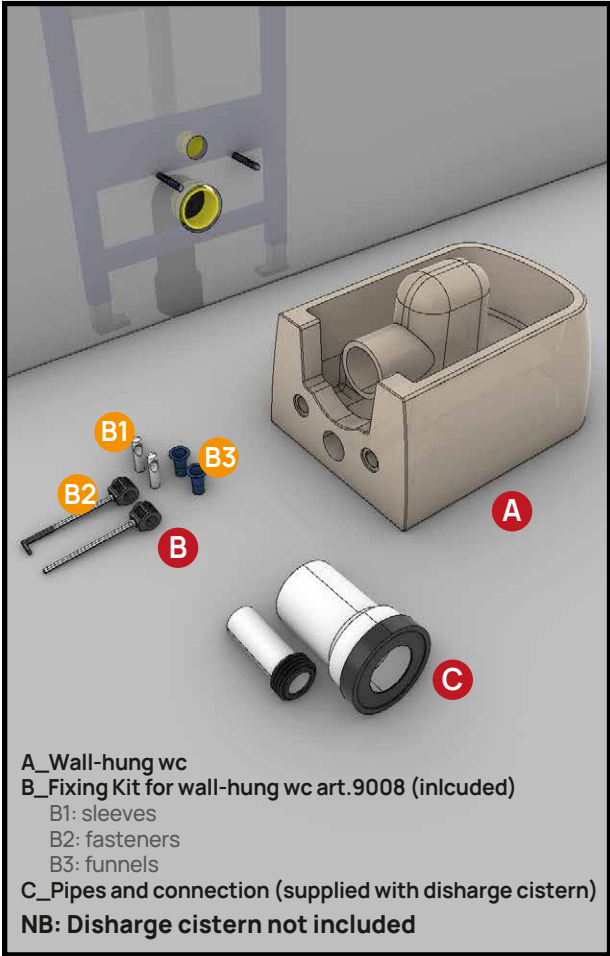


Avvitare i due fissaggi con l'apposita chiave di serraggio (in base alla tipologia in dotazione) - MAX 6Nm

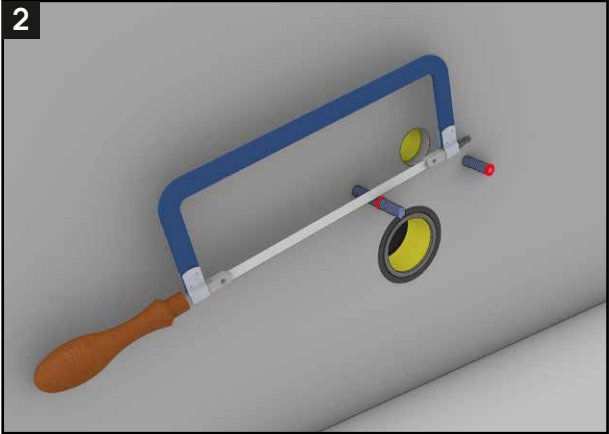


Installazione completata - Prima dell'utilizzo testare la corretta stabilità.

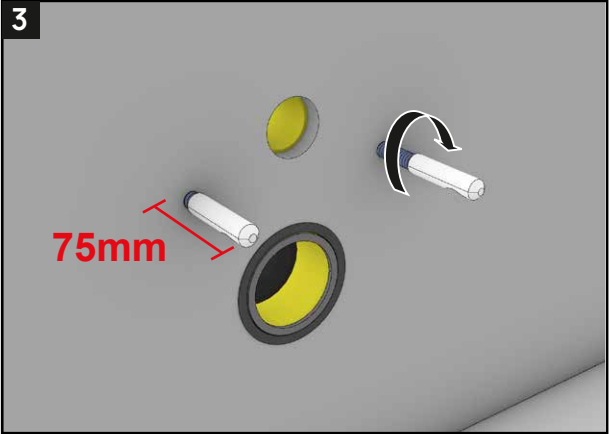




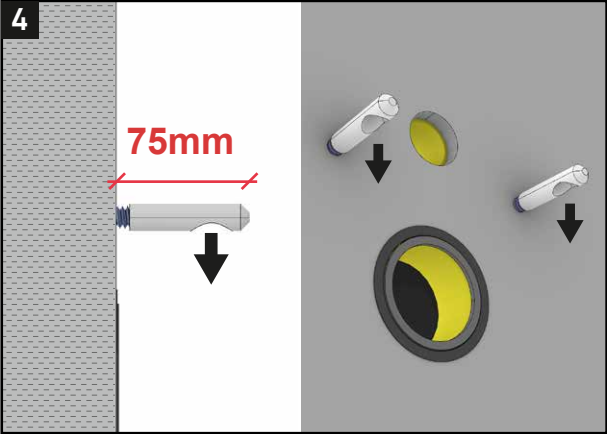
Mark the threaded rods coming out of the disharge cistern 30mm away from the wall.



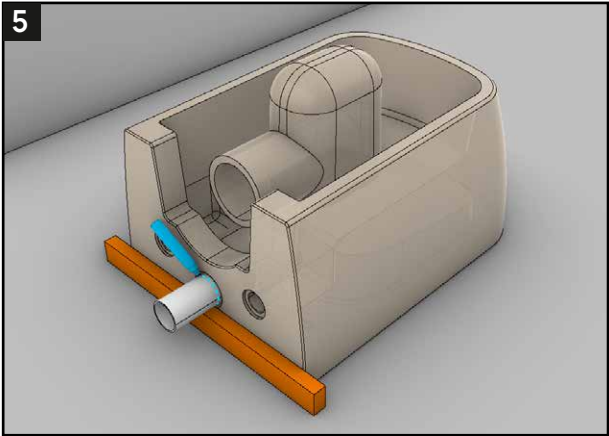
Cut the threaded rods to size according to the mark made in the previous step.



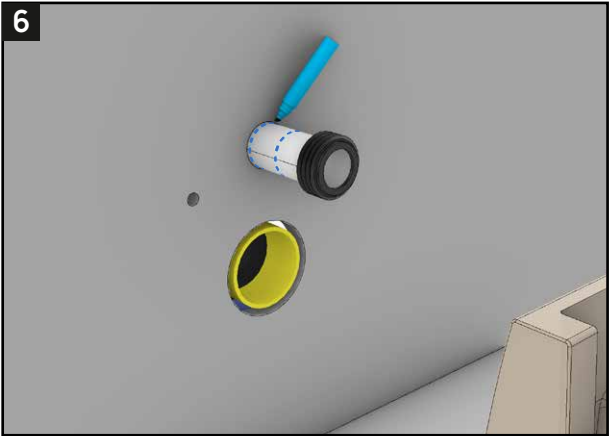
Screw the sleeves (B1) to the threaded rods, and adjust them to the indicated measure (75mm from the wall).



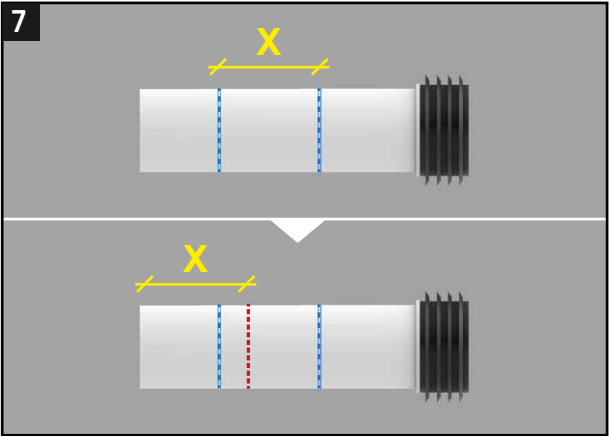
The sleeve cavity must be adjusted downwards. The adjustment tolerance is preferable in negative (<75mm)



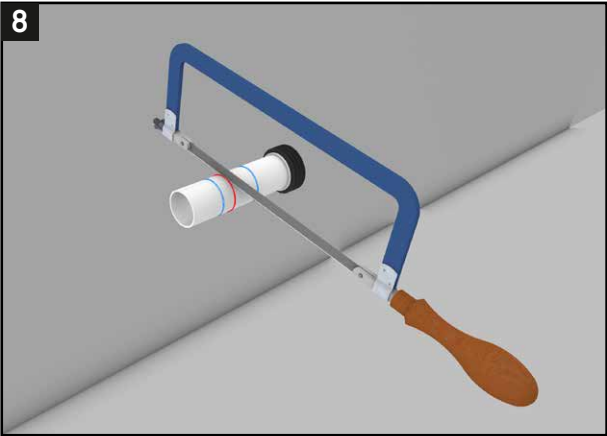
Insert the water inlet pipe into the correspondant hole of the wc until it stops; with the help of a ruler, mark the pipe in line with the back wall of wc.



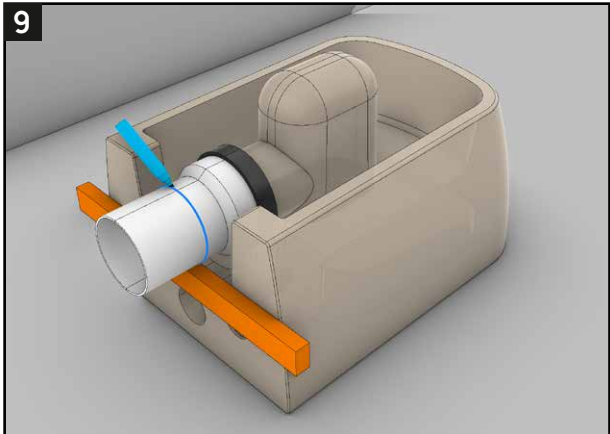
Insert the water inlet pipe into the appropriate seat of the wall-mounted discharge cistern until it stops; mark the pipe in line with the wall.



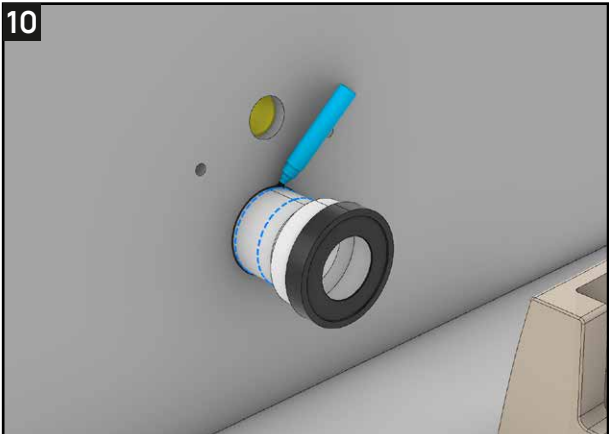
Take the "X" measurement resulting between the 2 marks on the tube and transfer it to the end of the tube, making a further mark (RED).



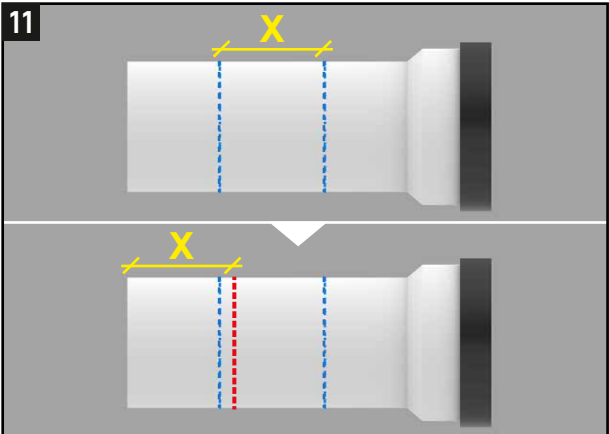
Cut off the excess part of the tube, following the mark made in the previous step.



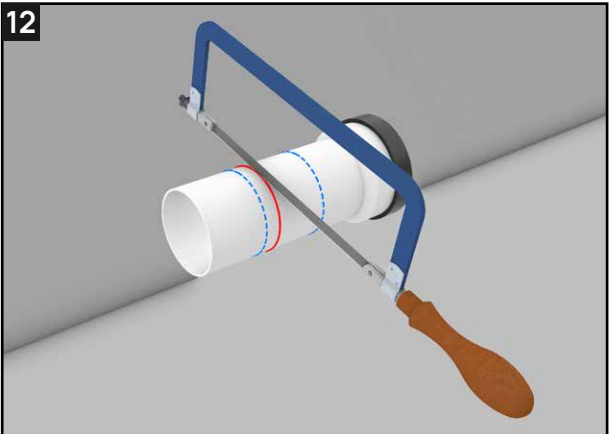
Insert the drain pipe into the toilet trap until it stops; using a ruler, mark it in line with the back wall of wc.



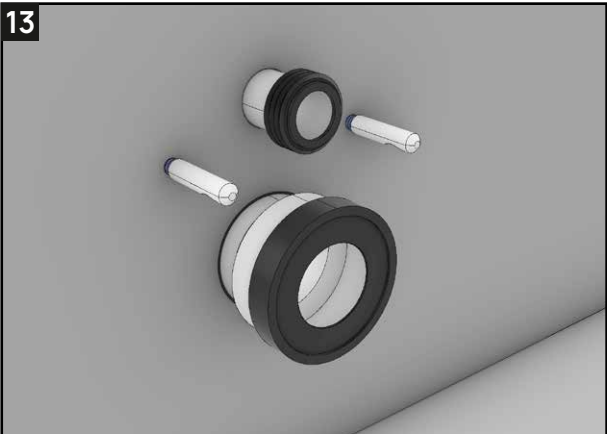
Insert the drain pipe into correspondant seat of the wall-mounted discharge cistern until it stops; make another mark in line with the wall.



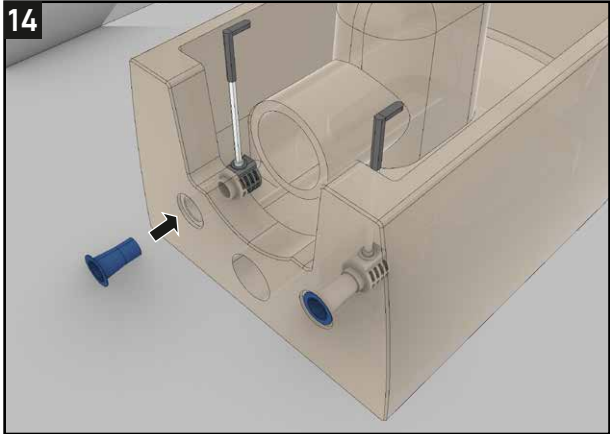
Take the "X" measurement resulting between the 2 marks on the tube and transfer it to the end of the tube, making a further mark (RED).



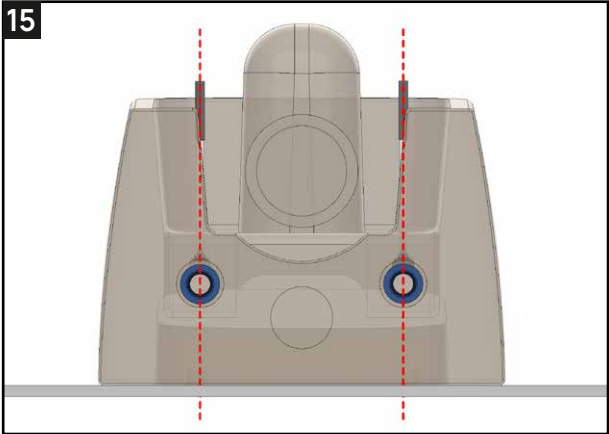
Cut off the excess part of the tube, following the mark made in the previous step.



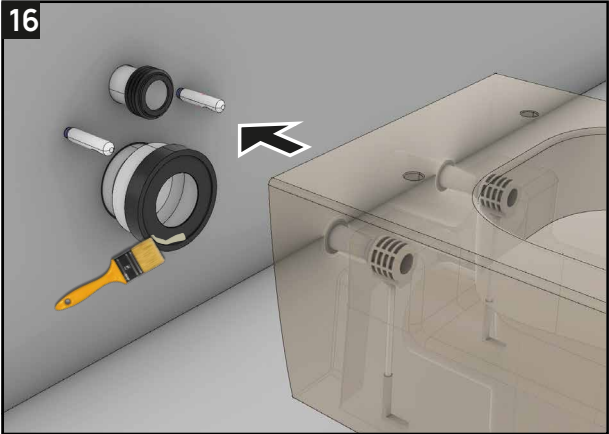
Insert the supply and drain pipes cut to correct size into the appropriate seats.



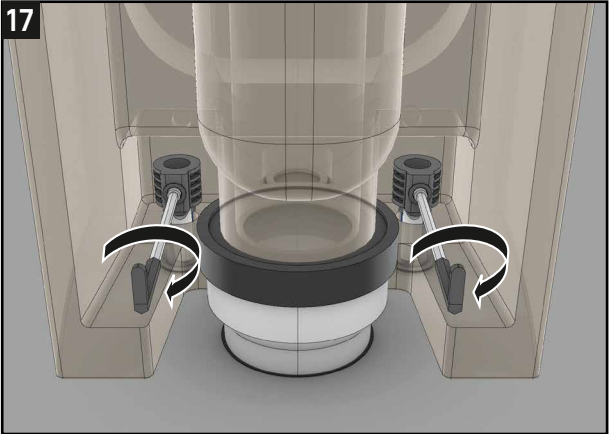
Insert the fasteners (B2) into the ceramic from the inside of wc and hook the funnels (B3) into their holes.



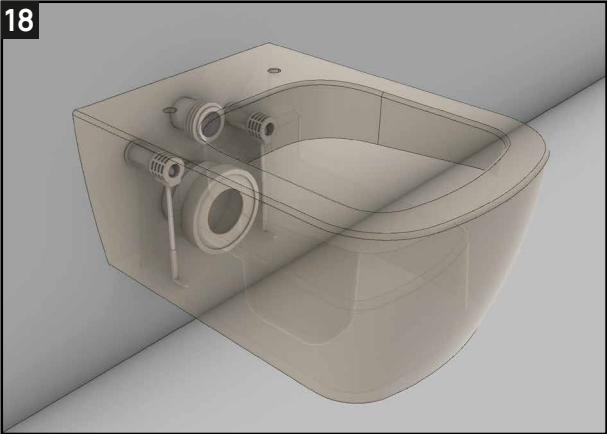
Rotate the fasteners (B2) until their axys are perpendicular to the floor.



Lubricate the gaskets and install the wc on the wall making sure that the sleeves(B1) are inside the funnels (B3).



Screw the two fasteners with the appropriate tightening key (depending on the fixing type supplied) - MAX 6Nm



Installation completed - Test for correct stability before use.