

design JASPER MORRISON

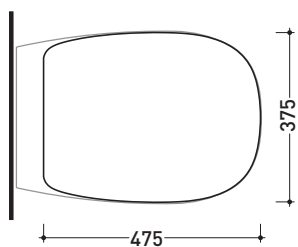
2014

BNCW03

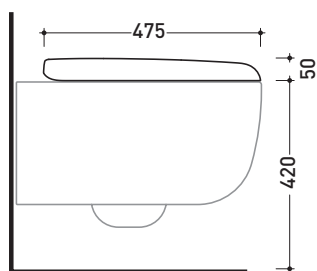
Soft-closing thermosetting wrapping seat & cover with quick-release hinges

Complements: Bonola wall hung wc (BN118)
Bonola wall hung wc goclean (BN118G)

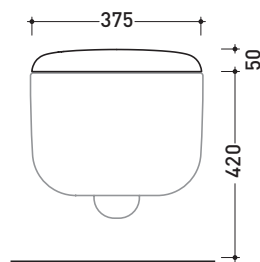
Package dim. 55 x 40 x 7 | Weight 3,8 kg | Pz. Pallet n° -



vista zenitale / zenital view



vista laterale / lateral view



vista frontale / frontal view

size in mm

january 2016

THERMOSETTING: glossy finish

white

black



matt finish

milky white

graphite

lava grey

