

design **NENDO**

2016

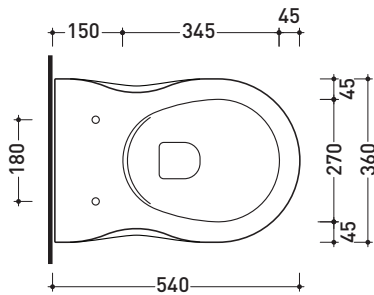
PH118G

Wall hung wc with goclean® system

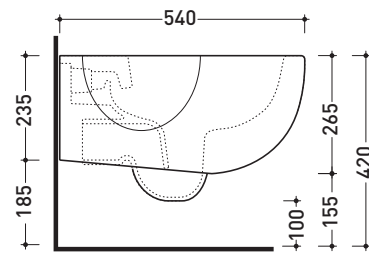
Complements: **Soft-closing thermosetting wrapping seat&cover (PHCW03)**
 Line accessories: **TWO - HOOP - NOKE' - FOLD**

Technical accessories: **Universal fixing bracket for wall hung wc/bidet (41/P)**

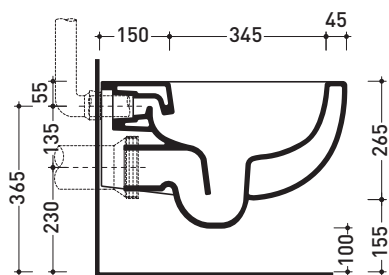
Package dim. **57 x 39 x 35 cm** | Weight **21 kg** | Pz. Pallet n° **15**



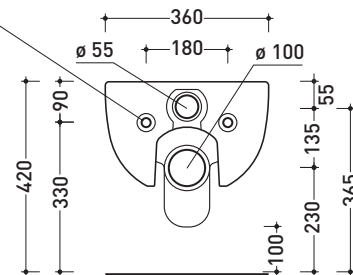
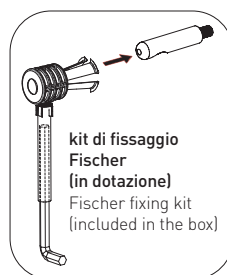
vista zenitale / zenital view



vista laterale / lateral view



sezione longitudinale / section



vista retro / back view

size in mm

january 2016

CERAMIC: glossy finish

white

black



matt finish

milky white

graphite

lava grey

